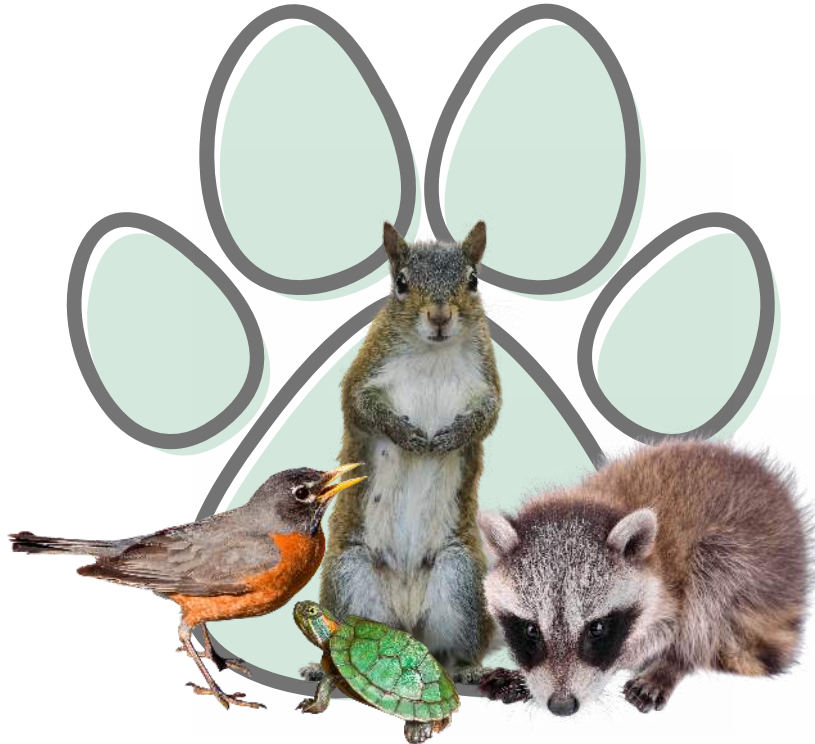


WILDLIFE COMFORT DO-IT-YOURSELF PACKET



[THANK YOU for your interest in helping the animals of the
Animal Welfare League of Arlington!](#)

This Do-It-Yourself packet outlines several fun and easy projects that will help our animals have a better experience while in our care!

If you have any questions about a project, or would like to know what would benefit our organization the most, please contact the Animal Welfare League of Arlington at (703) 931-9241 or email us at mail@awla.org.



TABLE OF CONTENTS

Wildlife in Our Community.....	3
Start a Fundraiser.....	4
Rice Socks.....	5
Transport Dens.....	6
Deterrence Shake Cans.....	7
Felt Squares.....	8
Bat Wraps.....	9
Hammock Hangouts.....	10
Knitted Nests.....	11
Snuggle Sacks.....	13
Honeycomb Hammocks.....	16



WILDLIFE IN OUR COMMUNITY

Here at AWLA, we care about all animals, including our local wildlife. Our Animal Control officers work tirelessly to make the community a better place for both people and animals.

The Animal Welfare League of Arlington is a proud member of the HSUS Wild Neighbors Program which promotes finding humane and non-lethal solutions to problems with your wild neighbors. To learn about these innovative and effective approaches to problems you might encounter in your home, yard or garden, please visit

<https://www.humanesociety.org/resource/wildlife-management-solutions>

ARLINGTON COUNTY & CITY OF FALLS CHURCH

If you come across an **ANIMAL RELATED EMERGENCY** or require immediate assistance, please call

703-931-9241

For **NON-EMERGENCY** situations, please submit a

[Wildlife Conflict Report](#)

and an Animal Control officer will respond with 24-48 hours



START A FUNDRAISER

Do something you love to help support the animals! Creating and participating in a fundraiser is a great way to help the many animals we help at our shelter and in our community.

How to Start a Fundraiser

1. Visit our website to help set up your fundraiser (**CLICK HERE**)
2. Choose an activity or item you would like to sell to raise money
 - a. Running for a Cause
 - b. Dog Wash
 - c. Baking Cookies/Treats
 - d. Selling handmade Bracelets etc.
3. Create Flyers for your goods/service and hang around neighborhood (or email them out to your friends)
4. Raise money by having people sponsor your activity or by purchasing your goods.
5. Donate the money directly to the AWLA or go out and buy suggested item that would most benefit our animals.

Best Items to Purchase for Wildlife/Animal Control

Visit our **ONLINE WISHLIST**
IN-KIND DONATIONS

First Aid Kits
Plastic Tarps



RICE SOCKS

Level of Difficulty: 🍷

What you'll need:

- Long tube socks (knee-length)
- Uncooked Rice
- Cup
- Optional: Markers (non-toxic)/Sharpies
- Optional: Sewing Machine

1. Color sock with markers with fun messages or designs for our animals.
2. Pour some rice into the a cup. Stretch the opening of the sock over the cup, and gently pour contents into sock. Do not overstuff sock. Make sure it has some flexibility to conform to the body of the animals/make a nice cushion.
3. Close the sock by doing one of the following
 - a. Tie the sock end using the tube of the sock
 - b. Use a sewing machine and sew across the sock a few times to secure the rice contents into the foot of the sock.
4. Donate! These will be used to keep small animals warm.



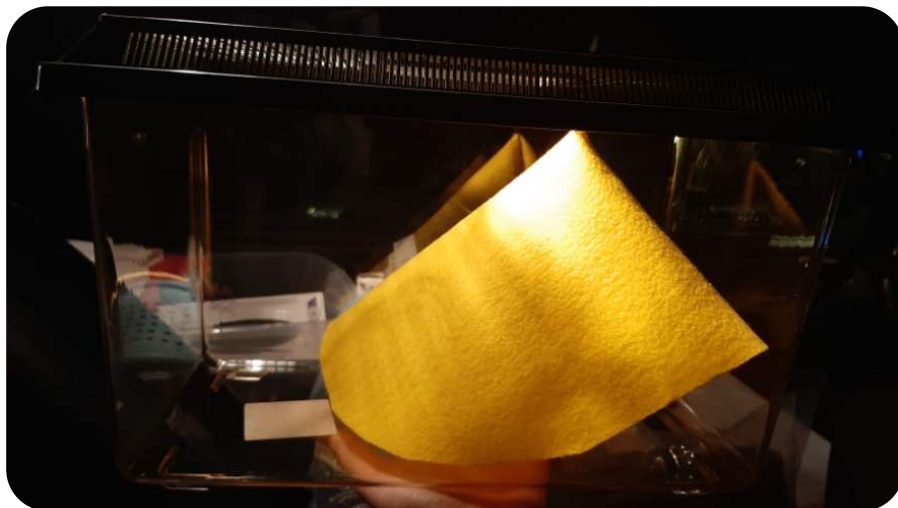
FELT SQUARES

Level of Difficulty: 

What you'll need:

- Felt
- Scissors
- Ruler
- Fabric Marker

1. Lay the felt sheets down on a flat surface,
2. Using a ruler and fabric maker, measure out 6 inch increments on each side to create 6" x 6" squares.
3. Cut out squares
4. Donate! This item helps with the safe transport for injured bats.



TRANSPORT DENS

Level of Difficulty: 

What you'll need:

- Shoe Boxes (Base & Lid)
- Fleece
- Scissors
- Ruler

1. Locate shoe boxes that are in gently used condition with no signs of any holes or bad damage. Make sure you have both the base and lid. Clean out of any contents.
2. Using the scissors, poke roughly 5 holes in the lid of the box.
3. Using a ruler, measure out 12" x 12" squares of fleece. Proceed to cut the squares out with scissors.
4. Layer 2 fleece sheets per box, close them.
5. Donate!

DETERRENCE SHAKE CANS

Level of Difficulty: 🦷

What you'll need:

- Aluminum can (cleaned/emptied)
- Pennies/screws/washers
- Duct tape
- Optional: Spray paint - bright color

1. Locate an aluminum can that is clean and dry
2. Fill the can with 10 to 30 coins, like pennies, or with small metal screws, nuts, bolts or washers. The can should be full enough so the items inside rattle around loudly when you shake it up and down. It should be light enough for you to carry around.
3. Seal the top of the can with duct tape enough that if the can were to be tossed, none of the contents would be lost or seal broken.
4. Optional: Spray paint the can a bright color to make it easily findable once tossed. Bonus: Use light blue/green to match the AWLA logo.
5. Donate! These cans are used by people who need to humanely deter wildlife from their backyards.



SIMPLE SNUGGLE SACKS

Level of Difficulty: 

What you'll need:

- Scissors (sewing is best)
- 1 (13" x 9.5" pieces) Fabric (fleece or felt recommended) - **A**
- Thread
- Sewing Machine or Can Hand-Stitch
- Pins

1. Cut fabric into 13in x 9.5in pieces.
2. Fold Fabric piece in half so it measures 6.5" x 9.5" and pin. **(B)**. Sew ½" from edge along the two sides, but do not sew the top (length of top side is 6.5") **(C)**. Trim ¼" off sides and set aside.
3. Flip inside out **(D)**
4. Roll the top down a little to give extra support to the opening. **(E)**
5. Donate!



Thank you to Volunteer Emma C

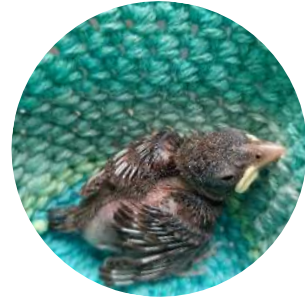
SIMPLE SNUGGLE SACKS

A

B



KNITTED NESTS



Level of Difficulty: 

What you'll need:

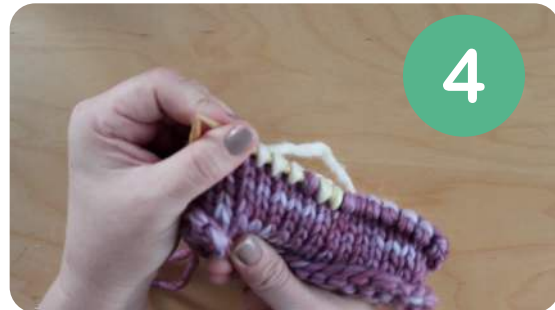
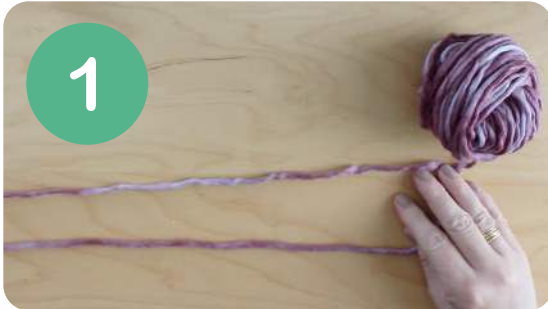
- #5 Yarn (bulky weight - 80 grams)
- 1 Circular Knitting Needle (size 10.5 US/6.5mm, 16in length)
- 4 Double Pointed Needles (size 10.5 US/6.5 mm)
- Scissors
- Tapestry Needles
- Measuring Tape

1. Knit Double-Stranded, with two strands of yarn. Doubling up on our yarn helps the nest to be sturdy and durable.
2. Make a slip knot and cast on 40 stitches onto your circular needle using the simple long-tail cast on method holding your yarn double.
3. Place a marker and make certain not to twist our stitches.
4. Begin knitting in the round using the stockinette stitch for about 20 rows (roughly 4 inches in height)
5. Switch to double pointed needles for your decreases divided in multiples of 8 stitches (16/16/8)
 - i. Repeat pattern between the asterisks * * K=Knit Stitch, K2Tog=Knit two stitches together
 1. *K6, K2Tog* (35 stitches remain)
 2. *K5, K2Tog* (30 stitches remain)
 3. *K4, K2Tog* (25 stitches remain)
 4. *K3, K2Tog* (20 stitches remain)
 5. *K2, K2Tog* (15 stitches remain)
 6. *K1, K2Tog* (10 stitches remain)
 7. *K2Tog* (5 stitches remain)
6. Break tan, leaving about 10 inches of a yarn tail. With your tapestry needle, weave it through your remaining stitches. Weave the yarn through and break it off. Donate!

VIDEO FOR HELP



KNITTED NESTS CONTINUED...



BAT WRAPS

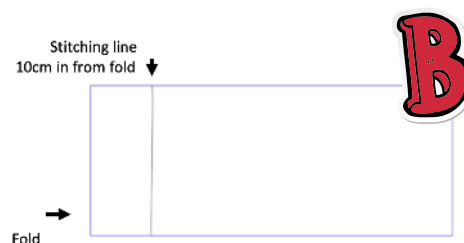
Level of Difficulty: 

What you'll need:

- Flannel Fabric (100% cotton)
- Poly fill stuffing
- Sewing Machine



1. Cut flannelette in strips measuring 9" x 47". This is a recommendation and won't be a problem if wraps are slightly different in size to save on fabric wastage. All wraps will be happily received and used.
2. Fold fabric with right sides facing and sew around the three edges, leaving a 4" opening. **(A)**
3. Pull the fabric through the opening so that the right side is now showing
4. Sew a line of stitching down the width of the wrap to create the pillow sections
5. Fill the pillow with stuffing - it should be firm but still squishy - and sew the opening to close the pillow.
6. Sew $\frac{1}{4}$ " from the edge around the three sides to make the wrap more stable **(B)**
7. Make sure all loose threads are trimmed so the bat cannot get tangled in them.
8. Donate!



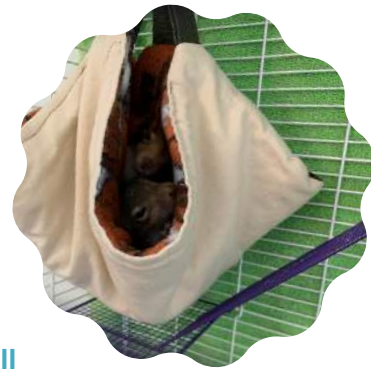
Directions By: Shoalhaven Bat Clinic and Sanctuary

HAMMOCK HANGOUTS

Level of Difficulty: 

What you'll need:

- Fleece (15" x 15")
- Cotton (15" x 15")
- Pin
- Ribbon ($\frac{3}{8}$ " wide) or Elastic
- Sewing Machine
- Optional: Poly fill stuffing or cotton batting off roll



1. Cut each fabric into a large 15" x 15" square.
2. Pin the squares right-side together. Sew around edges with a $\frac{1}{2}$ " seam leaving a 3" space to turn right side out.
3. Turn right-side out, push out corners, and press with iron. Optional: add a small amount of cotton batting or poly fill stuffing
4. Use zig-zag stitch all the way around, making sure to turn in raw edges and close the hole.
5. Cut ribbon into four 4 $\frac{1}{2}$ " strips. Fold strips in half and attach to each corner of the small square to fleece side. These allow hammocks to be attached to cages.



SNUGGLE SACKS

Level of Difficulty: 

What you'll need:

- Scissors (sewing is best)
- 2 (12" x 30" pieces) Main Fabric (fleece or felt recommended) - **A**
- 2 (12" x 30" pieces) Coordinating Fabric (fleece or fuzzy fabric recommended) - **A**
- Thread
- Sewing Machine
- Pins

1. Fold Main Fabric piece in half so it measures 12" x 15" and pin. **(B)**. Sew $\frac{1}{2}$ " from edge along the two sides, but do not sew the top (length of top side is 12") **(C)**. Trim $\frac{1}{4}$ " off sides and set aside.
2. Do step 1 for Coordinating Fabric. Turn right-side out so the seams are on the inside. **(D)**
3. Put Coordinating Fabric "bag" inside the Main Fabric "bag" with right sides together. Pin the top and sew along the edge with $\frac{1}{2}$ inch seam. Leave a 2" hole **(E+F)**.
4. Pull the fabric inside out of your small hole, giving you two connected "bags". **(G)**. Tuck the interior bag into the exterior bag. **(H)**
5. Tuck in raw edges. Sew all the way around the top of your bag, making sure to close the 2" hole. **(I)**
6. Roll the top down a little to give extra support to the opening. **(J)**
7. Donate!



Thank you to Volunteer Emma C

SNUGGLE SACKS



SNUGGLE SACKS



ALL DONE!

HONEYCOMB HAMMOCK

Level of Difficulty: 

What you'll need:

- Fleece (½ yard)
- Cotton (½ yard)
- Pin
- Ribbon (¾" wide)
- Sewing Machine



1. Cut each fabric into 3 squares with the following dimensions: 8" x 8", 12"x 12", and 15" x 15" (6 squares total). Set aside the smallest square. **(A)**
2. On the medium and large square only, measure and mark 1½" from each corner. Cut off the corners by connecting the points you just marked. **(B)**
3. Pin all the cut squares right-side together (small, medium, large). Sew around edges with a ½" seam leaving a 3" space to turn right side out. **(C)**
4. Turn right-side out, push out corners, and press with iron. Use zig-zag stitch all the way around the three different size squares, making sure to turn in raw edges and close the hole. **(D)**
5. Take medium square, cotton fabric facing up, find the center point on each side and mark with a pin. **(E)**
6. Take large square, fleece fabric facing up, pin the center point of each corner onto the medium square where you have pins from step 5. (Fleece from large meeting cotton from medium). Secure the large square to the medium square by sewing over the zig-zag stitch with a straight stitch. **(F)**
7. Cut ribbon into four 4½" strips. Fold strips in half and attach to each corner of the small square to fleece side. These allow hammocks to be attached to cages. **(G)** *Directions continue on page 17*

VIDEO FOR HELP

HONEYCOMB HAMMOCK

Directions Continued....

8. Take small square, cotton fabric facing up, find the center point on each side and mark with a pin. **(H)**
9. Take medium square with attached larger square, fleece fabric facing up, pin the center point of each corner onto the small square where you have pins from step 8. (Fleece from medium meeting cotton from small). Secure the medium square by sewing over the zig-zag switch with a straight stitch. **(I + J)**
10. All Done! The hammock should look like the one on the first page of these instructions.



HONEYCOMB HAMMOCK

