

YEAR *in* 20 REVIEW 25



A Year of Compassion
for Animals, People, and Wildlife



A YEAR OF TRANSITION, GROWTH, AND LIFESAVING IMPACT

The Animal Welfare League of Arlington's (AWLA) **2025 Year in Review** reflects a year defined by meaningful transition, resilience, and deepened community impact. This report highlights programmatic impact for Calendar Year 2025 (CY25), while financial results, corporate, and foundation partnerships reflect Fiscal Year 2025 (FY25).

During a period of leadership transition and evolving community needs, AWLA remained focused on its mission: to protect animals, support the people who love them, and strengthen the well-being of the Arlington community. Across shelter operations, animal control, and community resources, AWLA continued to expand access, keep animals in loving homes, and respond with compassion and accountability.

This work is made possible by a community that believes animals deserve care, love, and a second chance.

TABLE OF CONTENTS

4	Message from the CEO
5	Message from the Board Chair
6	Year in Numbers
7	Stories of Impact
8	Adoptions & Fostering
10	Pet Resource Center
14	Wildlife & Animal Control
18	Volunteers
20	Youth Programs
23	Donor & Partner Recognition
28	Looking Ahead
29	Financial Transparency
30	Appendix

MESSAGE FROM THE CEO



Dear Friends and Supporters,

It has been an honor to serve as Chief Executive Officer of the Animal Welfare League of Arlington during a year of growth and meaningful impact. I am deeply grateful to our Board of Directors, staff, volunteers, and the Arlington community for the trust, partnership, and dedication that make AWLA's work possible each day.

Throughout 2025, our team delivered high-quality care to animals with increasingly complex medical and behavioral needs while adapting creatively to ensure positive outcomes. From individualized shelter care to foster and adoption support, staff and volunteers worked together to meet animals where they were—often across longer care journeys that required patience, collaboration, and care.

At the same time, AWLA strengthened its role as a vital community resource. The Animal Services team successfully reunited lost pets with their families and reduced the need for surrender by expanding access to low-cost vaccines, spay/neuter vouchers, and veterinary assistance. As economic pressures intensified and demand for support grew—including a doubling of Pet Pantry visits in October—AWLA responded by increasing access to food, information, and resources that help families care for their beloved animals.

None of this work happens in isolation. I am profoundly thankful to our volunteers and foster families who give of their time and hearts to support animals; to our partner organizations and Arlington County for their collaboration; and especially to our donors, whose financial support enables AWLA to rise to the challenge of any moment. Your generosity and belief in AWLA allow us to respond to our community's animal-related needs with compassion, integrity, and accountability when our community needs us most.

As we look ahead, our focus remains on expanding access to services for animals, supporting the people who power our mission, deepening partnerships, and building long-term sustainability. Thank you for standing with AWLA and for being part of this work. I am grateful to share this journey with you and optimistic about what lies ahead.

With gratitude,

Lauren L. Lipsey
Chief Executive Officer



MESSAGE FROM THE BOARD CHAIR



Looking back on 2025 at AWLA, one of the moments I enjoyed most was making thank-you calls to our donors. Those conversations were a powerful reminder of how diverse and deeply compassionate this community is. I spoke with longtime adopters, people moved by our community care clinics, and even someone who crocheted recreations of a dog's vital organs so children could better understand animal health at camp. Each story was different, but all reflected a shared understanding of how animals enrich our lives—and a desire to make that experience more accessible to others.

From a Board perspective, that sense of shared purpose guides our work. This year, I had the humbling responsibility of stepping into the role of Board Chair following longtime board member Tim Denning, who helped shape the strong foundation we continue to build upon. Our focus has been on stewardship and stability so AWLA can continue to serve animals and the people who love them with integrity and consistency. 2025 also marked our first full year with Lauren Lipsey as President and CEO, and in close partnership with staff, she made meaningful strides—from completing the new Wildlife Intake Center to finding thoughtful ways to recognize the staff and volunteers who power AWLA's mission.

What makes this work possible is the combination of engaged supporters and truly exceptional staff. AWLA's world-class team brings skill, compassion, and professionalism to every interaction, whether rescuing a large flock of finches or increasing community support during a prolonged government shutdown. Their efforts are strengthened by volunteers and donors who show up in countless ways, often quietly and always meaningfully.

I am grateful to everyone who played a part in AWLA's work this year. 2025 reinforced for me that this organization's strength lies not only in what it does, but in the community that surrounds and sustains it. Whatever your role in that community, thank you for helping to make AWLA a place that serves animals—and the people who love them— with care and compassion.

Alyssa Williamson
Board Chair

YEAR IN NUMBERS

CY25

JANUARY- DECEMBER 2025

ANIMALS SERVED: 3,423*

TOTAL ADOPTIONS

1,328

273

DOGS

915

CATS

140

SCAs

AVERAGE LENGTH OF STAY

37

DAYS

34

DAYS

36

DAYS

FOSTER PLACEMENTS

681

144

DOGS

477

CATS

60

SCAs

ANIMALS TRANSFERRED IN FROM PARTNER SHELTERS: 325

ACTIVE FOSTER HOMES: 412

VOLUNTEER HOURS CONTRIBUTED: 16,060

*Includes domestic animals and wildlife.

STORIES OF IMPACT

RINGO'S JOURNEY

Adoption & Behavioral Care



Ringo was surrendered to AWLA in March 2025. He arrived shut down. While his previous owner cited a “bite history,” limited information about the circumstances prompted AWLA to begin with comprehensive behavioral and medical evaluations to better understand his needs.

Once Ringo allowed the medical team to safely examine him, the source of his distress became clear: a stick was lodged across the roof of his mouth, embedded in his palate, and causing significant pain. The discovery explained much of his behavior that had been previously labeled as aggression. After the stick was removed and Ringo began to heal, he started to become the dog he truly was.

As his pain subsided, Ringo's body language softened. He became more curious, more relaxed, and increasingly willing to engage with the world around him. What followed was months of dedicated, collaborative work. AWLA's veterinary team, behavior specialists, animal care staff, volunteers, foster caregivers, and adoption counselors all played a role in helping Ringo build confidence, learn coping skills, and experience safety and consistency.

Ringo's path was not quick or easy. He moved between the shelter and foster homes, received individualized behavior support, and required patience from everyone involved. With time, care, and teamwork, Ringo learned how to trust again. In June 2025, he was adopted into a home that understood his needs and saw his potential—not his past.



*“Ringo immediately clung to me as his person and became my best buddy. Taking him home was the greatest decision I ever made. All it took was patience and lots of exercise to bring out a very good boy.” - **Tom, Ringo's adopter***

Ringo's story is a testament to what is possible when we commit to individualized care and address an animal's comprehensive needs, both medical and behavioral. It reflects AWLA's belief that every animal deserves to be seen, evaluated, and given the opportunity to thrive.

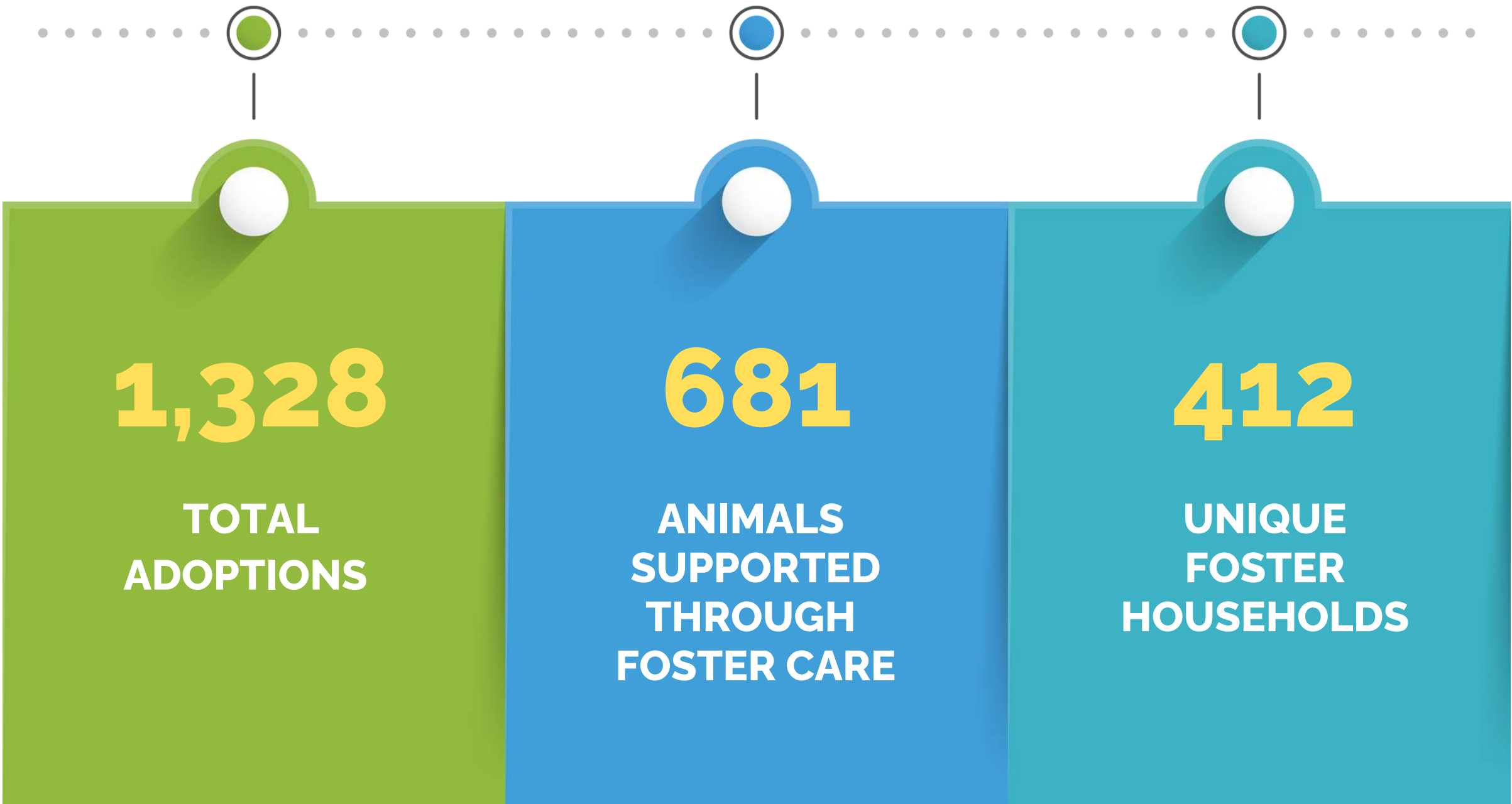


DONATE NOW

*Help make stories like
Ringo's possible*

ADOPTIONS & FOSTERING

In 2025, AWLA continued to prioritize positive outcomes for animals through adoption, foster care, and individualized pathways that recognize each animal's unique needs.



Foster caregivers played a critical role in AWLA's lifesaving work. By opening their homes to shy or fearful animals, neonates, long-stay animals, and those recovering from medical or behavioral challenges, fosters provided the stability and personalized care many animals needed to feel safe, show their true personalities, and ultimately succeed in adoption. In many cases, foster homes made the difference between an animal simply waiting and an animal truly thriving.



WHY LONG-STAY FOSTERING MATTERS

Some pets need more than time in a kennel to succeed. For pets who experience extended stays in the shelter, foster homes provide the calm, stability, and individualized attention that can make all the difference in their well-being. For these pets, fostering isn't a pause in care—it's a critical part of the adoption pathway.

In 2025, AWLA leaned on a network of experienced foster caregivers to support adoptable animals whose behavioral or medical conditions resulted in extended stays and, therefore, required specialized attention. These foster homes provided consistent routines, behavioral reinforcement, and the opportunity for pets to decompress outside the shelter environment—often revealing personalities and strengths that are difficult to see in a kennel setting. By sharing regular updates, supporting meet-and-greets with potential adopters, and staying engaged throughout the adoption process, foster caregivers help ensure long-stay pets remain visible, understood, and adoption-ready.

This model—pairing long-stay pets with committed foster homes—ultimately leads to better adoption matches. It reflects the patience, partnership, and quiet dedication that make fostering such a powerful part of AWLA's lifesaving work.

LONG-STAY FOSTER SPOTLIGHTS



Perry
*Fostered by
Mackenzie Robertson*



Maya
*Fostered by
Keri Baldino*



Sky
*Fostered by
Helen Anthony*

These dogs represent just a few of the many long-stay pets who benefited from the stability, routine, and individualized care provided by AWLA foster homes.

PET RESOURCE CENTER

AWLA's Pet Resource Center is the hub of the organization's prevention-focused services, designed to help families care for their pets and avoid unnecessary surrender. Through a combination of on-site services at AWLA and community-based outreach, the Pet Resource Center provides access to pet food, veterinary assistance, spay/neuter vouchers, and critical resources that support pet ownership during times of financial hardship.

Services offered through the Pet Resource Center are intended to be accessible and barrier-reducing, prioritizing families experiencing economic instability, housing insecurity, or temporary financial crisis. By meeting families early—before challenges become emergencies—AWLA helps keep pets healthy and together with the people who love them.



DONATE NOW

*Support families and the
pets who depend on them*



COMMUNITY-BASED PET RESOURCE WORK

In addition to services offered at AWLA's physical location, the Pet Resource Center extends into the community through a place-based, partnership-driven approach. In 2025, AWLA's mobile pet resources program visited eight strategically located sites across Arlington County, completing 62 outreach visits at food pantries, housing communities, schools, and faith-based organizations.

By embedding pet support within trusted community spaces, AWLA reduces barriers to care and deepens trust with families who may not otherwise access traditional animal services. This approach recognizes that supporting pets also supports household stability, health, and dignity.

"AWLA's partnership and outreach this year has been a terrific benefit to AFAC's many families. Co-locating our services means that pet owners can access nourishing food for all their loved ones, including the four-legged family members who provide so much comfort and companionship." — Lily Duran, Director of Client Services, Arlington Food Assistance Center



COMMUNITY PARTNERSHIPS IN ACTION

During 2025, AWLA collaborated closely with organizations addressing food insecurity, housing instability, and access to essential services, including **Arlington Food Assistance Center (AFAC)**, **Capital Area Food Bank**, **Affordable Homes & Communities (AHC Inc.)**, **Our Lady Queen of Peace Catholic Church**, **Culpepper Gardens**, and a Title I elementary school offering wraparound family services.

In June 2025, AWLA was honored as **AFAC's Community Partner of the Year**, recognizing the impact of sustained, collaborative outreach. At Our Lady Queen of Peace Catholic Church, where approximately 400 families are served weekly, AWLA helped ensure that families experiencing the greatest need could also care for their pets with dignity.



"Having the Animal Welfare League of Arlington come to our food pantry is such a bonus to our families. We can give them peace of mind that they will be able to feed their families and their four-legged family members. Partnering with AWLA helps families keep themselves healthy and offer their pets healthy food."

— Sally Diaz Wells, Social Justice and Outreach Minister, Our Lady Queen of Peace Catholic Church

WHY THIS WORK MATTERS

Since the pandemic, food insecurity in Arlington County has risen sharply. Arlington Food Assistance Center reports an **84% increase in family visits over the past four years**, while the Capital Area Food Bank estimates that **22% of Arlington households are food insecure**. At the same time, real wages in the Greater Washington region have declined, and pet food costs have risen an estimated **20–25% over the past five years**.

For families who rely on pets for companionship, stability, and emotional support, these pressures can make it increasingly difficult to keep animals healthy at home. AWLA's Pet Resource Center responds directly to this challenge—providing timely, accessible support that keeps families together and reduces the need for crisis-driven shelter intake.

By investing in prevention, partnership, and place-based outreach, AWLA continues to strengthen both animal welfare and community well-being across Arlington.

CY25 COMMUNITY IMPACT

PET PANTRY & FOOD SUPPORT *	FREE COMMUNITY CARE CLINICS	LOW-COST SERVICES & VOUCHERS
PET FOOD DISTRIBUTED:	PETS SERVED:	PETS SERVED:
<i>Dry Food</i> 47,675lb	304	1,255
<i>Cans</i> 41,103	VACCINES ADMINISTERED:	VACCINES PROVIDED:
	454	2,070
PET PANTRY VISITS:	MICROCHIPS IMPLANTED:	MICROCHIPS IMPLANTED:
7,137	134	237
PETS SUPPORTED:	FLEA & TICK DOSES PROVIDED:	SPAY/NEUTER VOUCHERS PROVIDED:
16,365	912	646

**Household-level tracking begins in FY26. Numbers reflect multiple visits.*

WILDLIFE & ANIMAL CONTROL

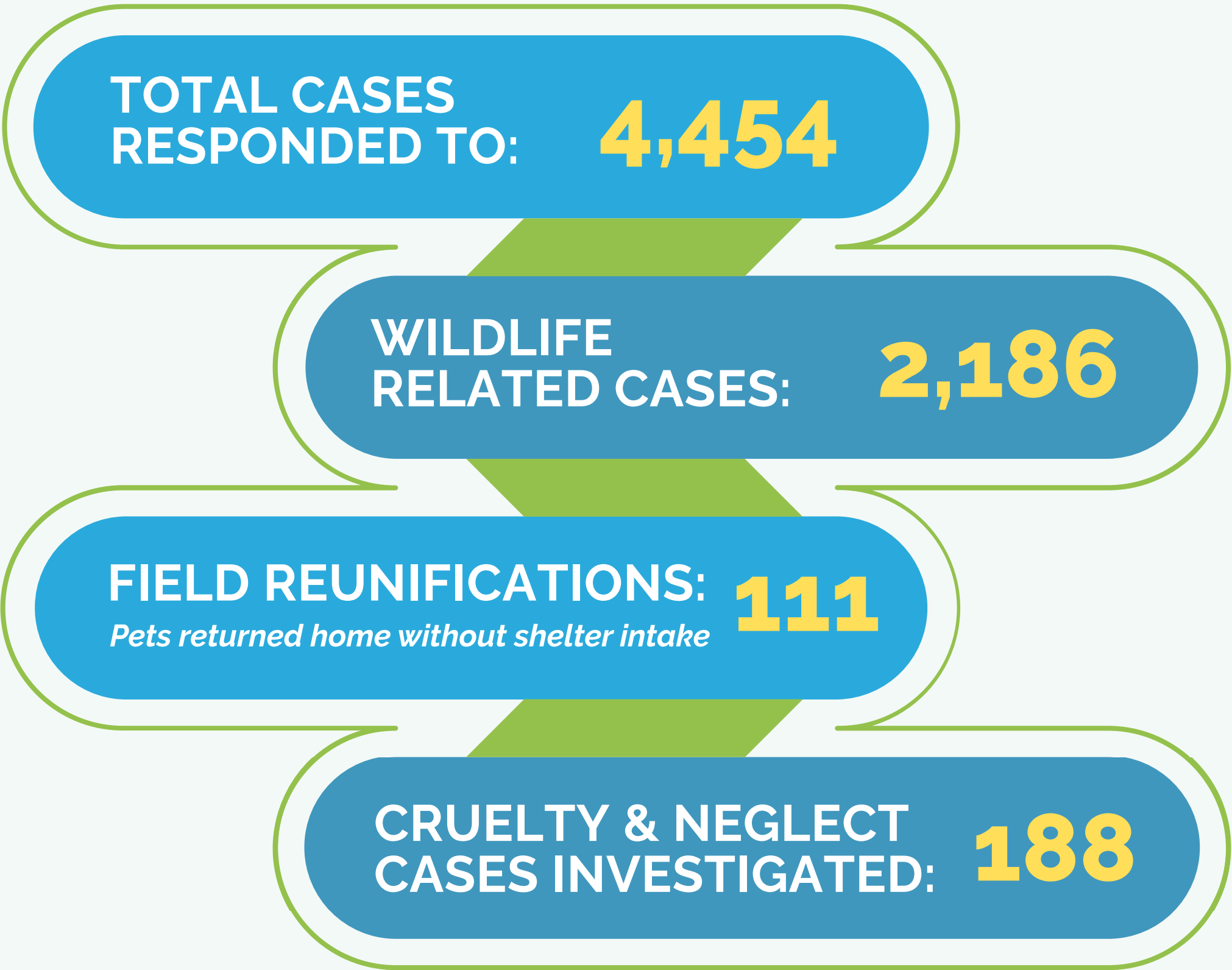
AWLA's Wildlife and Animal Control teams serve as first responders for animals and the Arlington community—balancing public health and safety, legal responsibility, education, and compassionate, evidence-based care. Under contract with Arlington County, AWLA responds to calls involving companion animals and wildlife, investigates cases of cruelty, neglect, and bites, and works proactively to help residents understand and comply with local and state animal welfare-related laws.

This work is rooted in AWLA's core belief: everyone deserves animal companionship, and communities are strongest when people are supported in caring for animals responsibly and safely.

**DONATE NOW**

*Help protect animals
beyond the shelter*

CY25 IMPACT



Whenever possible, AWLA prioritizes solutions in the field—reuniting pets with their families, offering guidance and resources, and resolving concerns without shelter intake. This approach reduces stress for animals, supports residents, and allows staff to focus resources where they are needed most.

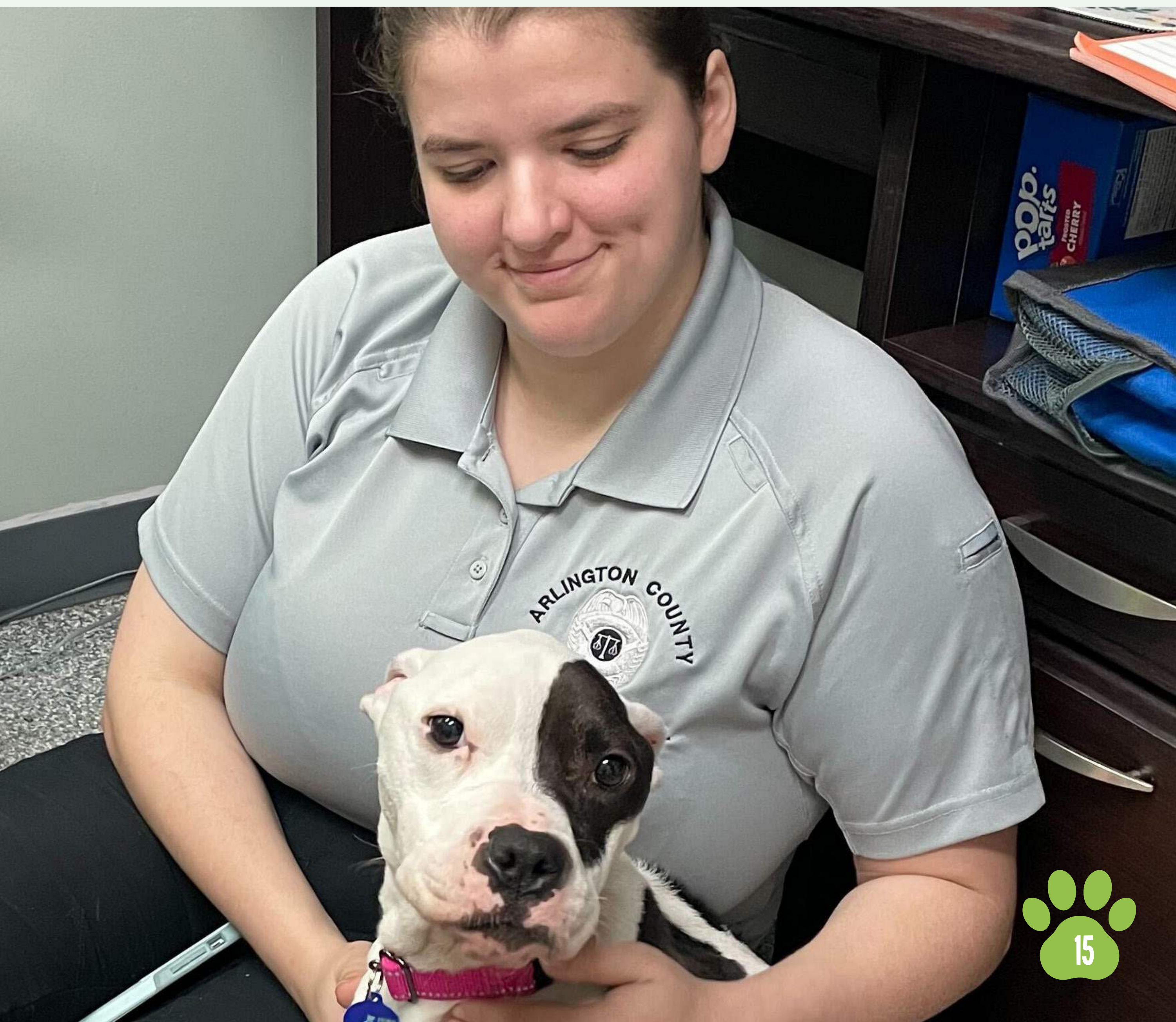
ANIMAL CONTROL IN ACTION

DOMINO'S STORY

In April 2025, AWLA Animal Control officers executed a search warrant involving severe neglect and rescued two dogs, Domino and her brother Duke. Both animals were critically underweight and required immediate medical intervention. Despite extensive care, Duke did not survive.

As part of the investigation, AWLA's Animal Control team played a central role in documenting conditions, collecting evidence, and preparing detailed reports to support the legal process that followed. Domino's case proceeded through lengthy litigation, during which Animal Control officers worked closely with veterinary staff and shelter teams to ensure her care needs were met while maintaining the integrity of the case.

Throughout this period, AWLA's veterinary, animal care, behavior, foster, and adoption teams supported Domino's recovery—balancing medical treatment, behavioral support, and the legal requirements associated with cruelty cases. Once custody was resolved and medical care completed, Domino was placed into foster care and ultimately adopted into a loving home. Domino's journey reflects the full scope of Animal Control's work: protecting animals in crisis, supporting legal accountability, and partnering across the organization to achieve safe, lasting outcomes. It underscores the persistence, professionalism, and compassion required to navigate cruelty cases from investigation through recovery.



WILDLIFE RESPONSE

TRIAGE, PARTNERSHIP, AND EDUCATION

AWLA's wildlife response is grounded in **triage, stabilization, and coordination**, led by Animal Control officers who are highly trained in the safe capture, handling, and assessment of a wide range of wildlife species. Officers routinely respond to situations involving injured, sick, orphaned, or displaced animals—including rabies-vector species—supporting both animal welfare and public health.

Upon intake, staff provide immediate assessment and short-term care to stabilize animals and determine next steps. AWLA then coordinates the safe transfer of wildlife to licensed rehabilitation partners who specialize in species-appropriate care. This model ensures animals receive the highest standard of care while allowing AWLA to respond efficiently and responsibly to a high volume of cases.

To support this growing need, AWLA continued investment in a **new Wildlife Resource Center**, scheduled to open in 2026. The center will enhance intake capacity, medical triage, and safe transfers, while also expanding public education and outreach for residents navigating wildlife concerns. This investment reflects AWLA's commitment to professionalism, public safety, and compassionate wildlife response.



WHEN THE COMMUNITY SHOWS UP FOR WILDLIFE

Caring for wildlife is not work AWLA does alone. In 2025, Arlington residents—and supporters far beyond the region—demonstrated how deeply people care about the animals who share our environment. When AWLA put out a call for help creating soft, reusable nests for orphaned and injured baby wildlife, the response was overwhelming. Knitters and crocheters from across the country answered the call, sending thousands of handmade nests to support animals in AWLA's care.

As a result, AWLA was able to share this wealth of resources with other area shelters and rehabilitation partners.

What began as a simple request quickly became a collective effort. Individuals shared patterns, created tutorials, and mailed packages filled with carefully crafted nests—each one a tangible expression of care for the smallest and most vulnerable wildlife.

These handmade nests provide warmth and comfort during a critical stage of recovery, but they also reflect something larger: a community willing to act, create, and contribute in meaningful ways when animals are in need.

WHY THIS WORK MATTERS

From emergency response and cruelty investigations to education and wildlife support, AWLA's Animal Control team ensures that Arlington remains a safe and compassionate place for animals of all species and the people who care for them. This work extends beyond enforcement—it is about guidance, prevention, and meeting moments of crisis with care.

By investing in strong partnerships, thoughtful infrastructure, and a community-centered approach, AWLA is building a system where animals receive timely help, residents feel supported, and neighbors are empowered to be part of the solution. Together, prevention, response, and community involvement work hand in hand to protect the wellbeing of animals and people across Arlington.



VOLUNTEERS

Volunteers are fundamental to AWLA's ability to care for animals, connect with the community, and deliver on its mission every day. Through their time, skills, and dedication, volunteers extend AWLA's reach—supporting animal care, enrichment, photography, events, advocacy, and countless behind-the-scenes efforts that make lifesaving work possible.

Between **January and December 2025**, volunteers contributed **16,060 hours of service**, representing an estimated **\$558,746 in donated time**. With an average of approximately **380 active volunteers** throughout the year, this collective commitment strengthens every aspect of AWLA's work and ensures animals receive individualized care and attention.

Behind these numbers are people who show up consistently, bring expertise to their roles, and help animals be seen not as statistics—but as individuals deserving of love and opportunity.

VOLUNTEER SPOTLIGHT

JULIE GOULD & STACEY SIMMONS

A partnership behind the photos that help animals find homes

Every week, Julie Gould of Bright Eyes Photography and Stacey Simmons arrive at the shelter with a shared goal: helping animals put their best paw forward. Together, they form a dedicated team behind many of the adoption photos that appear on AWLA's website—images that often provide the first, critical connection between an animal and a potential adopter.

Julie brings a photographer's eye and a deep understanding of how to capture an animal's personality in a single frame. Stacey works alongside her as the animal handler, helping pets feel safe, confident, and at ease during each session. Their teamwork allows animals—especially those who may otherwise be shy, overlooked, or misunderstood—to be seen for who they truly are.

It's no secret that a strong photo can make all the difference. A single image can inspire someone to click, to visit the shelter, or to come in and meet an animal in person. Julie and Stacey's work is fundamental to AWLA's communications and adoption efforts, transforming moments of uncertainty into opportunities for connection and hope.



Stacey's commitment extends beyond the photo sessions. In addition to supporting animals as a handler, she is also an active foster caregiver and a passionate advocate for foster pets, using her platform [@jazzywhitecoco](#) (Coco Casa de Fosters) to share animals in need of homes and encourage others to get involved. Her advocacy expands AWLA's foster network and brings greater visibility to animals waiting for families.

"I've enjoyed all of my volunteer roles throughout the shelter, but our photography sessions are my favorite. A photo is worth a thousand words, and that's especially true when showcasing our animals. When they are active for photos, they can show off their personalities, let the breeze blow through their fur (true glamour shots!), and generally have fun. Julie is so talented and always able to capture a great photo among the excitement and antics. We've even had animals from previous photo shoots adopted while we were at the shelter, and it's so wonderful to see their new families take them home." -Stacey

Julie's dedication to animal welfare also includes long-term philanthropic support. Along with her partner, Percy Ivy, she is the founder of the Woody & Mickey Healthy Pet Fund, which provides critical financial support that enables timely medical, behavioral, and specialized care for shelter animals and supports AWLA's Housing Emergency Lifeline for Pets (HELP)—ensuring pets can remain safe and cared for when their families face unexpected crises.

"My joy comes from photographing animals for their adoption photos with Stacey! These animals are fighting for a second chance. I showcase them finding their best expressions and personality traits, so potential adopters fall in love with them even before they arrive at AWLA. Stacey provides the TNT: Treats, Noisemakers, and Toys! This is what drives me every week!" -Julie

Together, Julie and Stacey exemplify the impact of sustained, skilled volunteer engagement. Their consistent collaboration and care help animals shine, and families find the companions they've been waiting for.

YOUTH PROGRAMS

AWLA's youth programs are designed to foster compassion, responsibility, and lifelong advocacy for animals. By engaging children and teens through hands-on learning, education, and direct interaction with animals and staff, AWLA helps young people understand how to care for animals and why their voices and actions matter.

From early childhood programs to teen volunteer opportunities, AWLA's youth initiatives connect education with empathy, empowering the next generation to be thoughtful, informed animal advocates.



CY25 YOUTH PROGRAM IMPACT *

2,544	Children and teens engaged through AWLA youth programs
1,301	Children reached through off-site outreach in schools and community spaces
267	Participants in tours and scouting programs
223	Children attended camps and Animal Allies programs
44	Classrooms visited through educational outreach
396	Children participated in Paws & Read
97	Teen volunteers onboarded
491	Volunteer hours contributed

**Each number reflects individual participants; some children participated in multiple programs.*

A PARENT'S PERSPECTIVE

"My children, currently 6 and 9 years old, have been actively involved in many of the AWLA youth programs, such as the Kids CARE program, summer camps, day camps, and scouting programs. Through crafts, presentations, and direct interactions with the animals and staff at the shelter, they have learned about different species and how to care for them. They especially enjoyed feeding, grooming, and safely engaging with dogs and cats, which has given them practical skills and a strong sense of responsibility.

These programs have also instilled in them the importance of compassion and caring for animals in need—and more importantly, that you are never too young to speak up for them. We truly enjoy visiting the shelter and will continue to support these programs in the future." — **Maria, AWLA Parent**



WHY YOUTH ENGAGEMENT MATTERS

Youth programs play a vital role in AWLA's long-term impact. By meeting children at an early age with education rooted in empathy and real-world experience, AWLA helps shape a community that values humane treatment, pet care, and shared stewardship of animals and wildlife.

Whether a child is reading to a shelter guinea pig, attending camp, volunteering as a teen, or learning about wildlife in their classroom, each interaction builds understanding—and strengthens the future of animal welfare in Arlington.



EXPANDING TEEN ENGAGEMENT IN 2026

In 2026, AWLA is expanding its youth programming with the launch of Shelter Squad, a new hands-on animal shelter experience for teens ages 13–15. This supervised program will introduce younger teens to the day-to-day work of a professional animal shelter through age-appropriate roles supporting animal care, enrichment, and shelter operations. Shelter Squad creates a meaningful entry point for teens eager to build responsibility, empathy, and real-world skills—while making a direct difference for animals in need.

DONOR & PARTNER RECOGNITION

AWLA's work is made possible by the generosity of individuals, families, businesses, foundations, and community partners who believe in a more compassionate Arlington. In 2025, supporters showed up in powerful and creative ways—through financial contributions, in-kind support, volunteerism, and partnerships that expanded AWLA's reach and impact.

Together, these contributions fueled lifesaving care, community services, youth programs, and innovation across the organization.

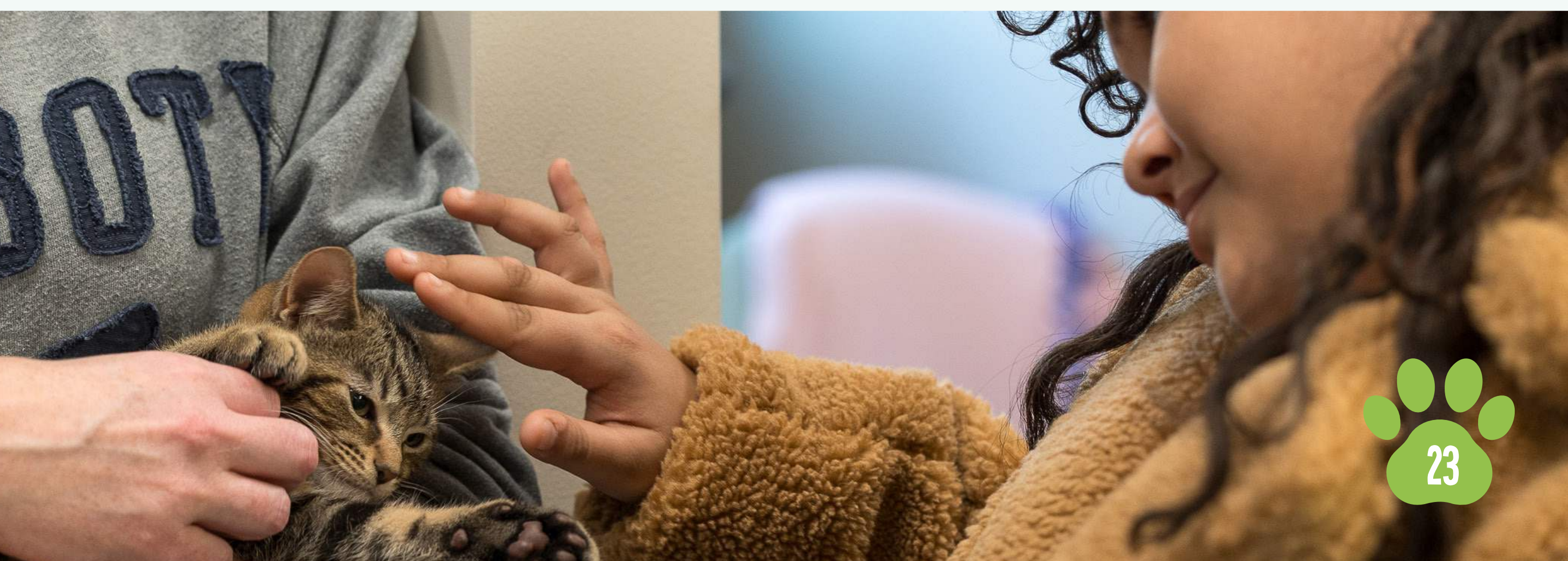
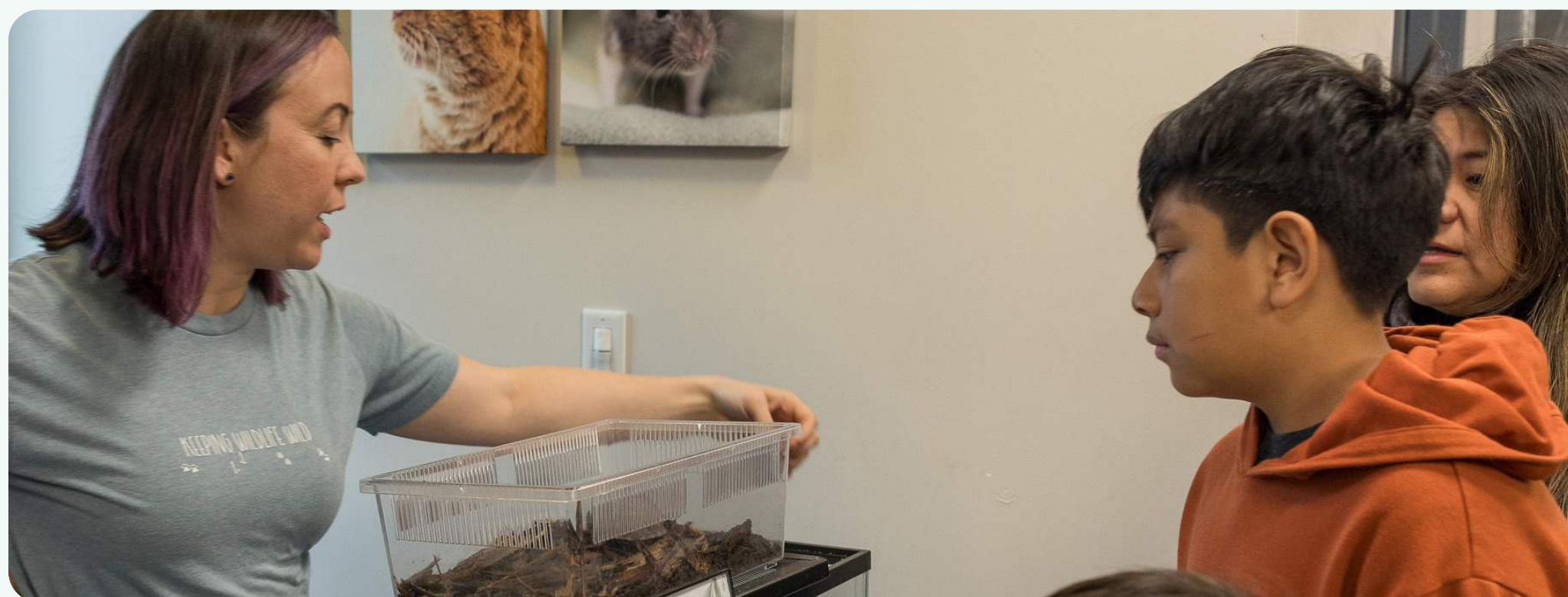
COMMUNITY-POWERED FUNDRAISING HIGHLIGHTS

"WE'RE EXPECTING!" BABY ANIMAL SHOWER

MARCH 2025

AWLA's annual Kitten & Wildlife Baby Shower welcomed a record **576 guests**, bringing together families, volunteers, and animal lovers to support the shelter's youngest residents. The event raised **\$2,500 in cash donations** and more than **\$15,300 in in-kind gifts**, providing essential supplies for kittens, wildlife babies, and their caregivers.

Guests enjoyed meeting adoptable kittens as well as hands-on activities and educational experiences led by staff, volunteers, and wildlife rehabilitators. The event reflected the power of community coming together to support animals at their most vulnerable stages of life.



FIRST-EVER RESCUE BREW CONTEST
JUNE 2025

In partnership with **The Board Room Game Bar & Brewery**, AWLA brought a long-held vision to life with the launch of the **Rescue Brew Label Contest**—a creative fundraiser that celebrated pets, craft beer, and community connection.



181 PETS ENTERED THE CONTEST

OVER 1,000 PEOPLE CAST VOTES

800 FIRST-TIME AWLA SUPPORTERS

RAISED 53,6K EXCEEDING THE \$50,000 GOAL

Winning pets were featured on limited-edition crowler labels and celebrated at a community happy hour in August. Rescue Brew demonstrated the impact of innovative partnerships in engaging new audiences and generating meaningful support for animals.

DONOR IMPACT SPOTLIGHT

CAROL BURNETT

Carol Burnett's relationship with AWLA began in 2007 with a single donation. Nearly two decades later, that initial gift has grown into a deep and multifaceted commitment to animals and families in the community.

In September 2024, Carol joined AWLA's volunteer corps, spending at least one day each week sorting and bagging pet food for the Pet Pantry. As a devoted pet parent to Scout, her 11-year-old Schipperke, Carol understood firsthand how essential pets are to family life—and found purpose in helping ensure no pet would go hungry.

In April 2025, as Carol prepared to take her first Required Minimum Distribution (RMD) from her IRA, she learned she could make a Qualified Charitable Distribution (QCD) directly to AWLA. By doing so, she fulfilled her IRS requirement while supporting an organization close to her heart—without increasing her taxable income.

"Helping animals in our community and making my retirement funds work smarter at the same time is a win-win," Carol shared. "I'm happy to be able to do it."

Carol's story reflects the many ways donors support AWLA—through time, advocacy, and thoughtful financial planning.



CORPORATE & FOUNDATION PARTNERS

Fiscal Year 2025 (July 1, 2024 – June 30, 2025)

AWLA is grateful for the corporate and foundation partners whose investments supported programs across adoption, community services, education, and outreach.

	\$40,000	<i>Paws & Read Program</i>
	\$25,000	<i>Exclusive Pet Insurance Promotion</i>
	\$15,000	<i>Kitten College</i>
	\$10,000	<i>Community Care Clinics</i>
	\$10,000	<i>Summer Camp Scholarships</i>
	\$10,000	<i>Adoption Folders & Adopter Support</i>
	\$5,000	<i>Adoption Folders</i>
	\$2,500	<i>2025 Calendar</i>
 <div>Amanda & Curtis Polk</div>	\$2,000	<i>2025 Calendar</i>
 <div>Trevor Woodbury</div>	\$2,000	<i>Cat Room Support</i>
 <div>Pamela Sorensen</div>	\$1,500	<i>2025 Calendar</i>

These partnerships expanded access to care, strengthened community programs, and helped create welcoming, supportive experiences for animals and adopters alike.

WHY SUPPORT MATTERS: *The Lifelong Impact of Adoption and Giving*

Every gift to AWLA, whether financial, volunteer-driven, or advocacy-based, helps create moments of connection that last a lifetime. Supporters don't just help animals find homes; they help families heal, grow, and experience the unconditional love that animals bring into their lives.

IN LOVING MEMORY

SNICKERS

Snickers entered her family's life in November 2011, adopted from AWLA following a difficult loss. A calico with extra toes and a gentle spirit, she quickly became a source of comfort, stability, and unconditional love.

She bonded closely with her family, offering quiet companionship during times of transition. When Snickers once went missing for three weeks during a cold, rainy spring, her family searched tirelessly—setting traps, monitoring night-vision footage, and refusing to give up hope. When she finally returned home, she stayed close, as if she understood just how deeply she was loved.

Snickers lived a full life, moving with her family through different seasons and homes, even becoming a beloved mascot during college years. Calm and affectionate, she seemed to know when someone needed to slow down and take a breath. When the family dog, Kuma, neared the end of his life, Snickers slept by his side each night.

She passed away suddenly in October 2025 at the age of 14. Though her life ended, her impact did not. Snickers' story reflects the lasting bond between people and the animals they welcome into their lives—and the reason so many AWLA supporters choose to give back, ensuring other families can experience that same love.



WITH GRATITUDE

Every contribution—time, talent, advocacy, or financial support—makes stories like Snickers' possible. We are deeply thankful to everyone who supported AWLA in 2025 and helped create lifelong connections between animals and the people who love them.

LOOKING AHEAD

In 2026, our focus remains on building upon the progress of the past year while responding to evolving needs in our community. Our priorities include:

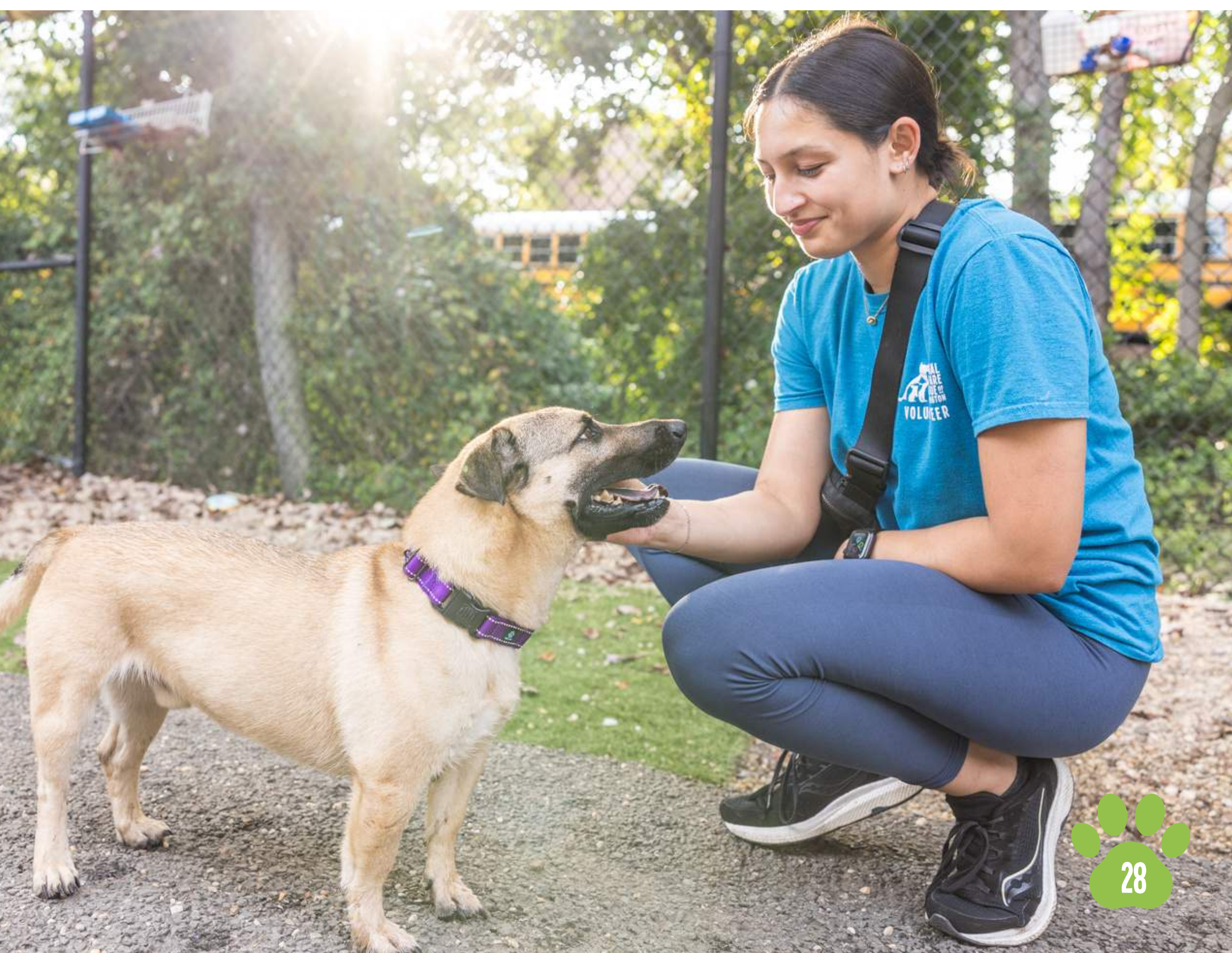
- ***Supporting staff and volunteer capacity, ensuring the people who power our mission have the resources they need to thrive.***
- ***Expanding access to Pet Resource Centers and community-based services that help families care for their pets and prevent unnecessary surrender.***
- ***Strengthening partnerships across Arlington and the region to deepen impact and collaboration.***
- ***Continuing innovation in animal and wildlife care, including expanded triage, prevention, and education efforts.***

These priorities reflect AWLA's commitment to compassionate, responsible animal welfare—rooted in community, guided by expertise, and focused on lasting impact. Together, we are building a future where every animal in Arlington can thrive.

*Join us in building a more
compassionate Arlington*



DONATE NOW



FINANCIAL TRANSPARENCY (FY25)

AWLA is committed to transparency and responsible stewardship of donor and public funds.

FY 2025 FINANCIAL REPORT

REVENUE	
Arlington County & City of Falls Church Contracts	\$1,654,367
Fundraising (General Operating/Unrestricted)	\$1,647,768
Programs	\$459,766
<hr/>	
Total:	\$3,761,901

Fundraising (Donor Restricted)*	\$359,432
---------------------------------	-----------

EXPENSES	
Animal Control	\$723,998
Fundraising	\$648,479
Programs	\$1,046,963
Management	\$62,600
Shelter Operations	\$2,395,383
<hr/>	
Total:	\$4,877,423

*DONOR RESTRICTED REVENUE	
Bob & Pat Ragan Humane Education Fund	\$10,015
Dr. Cottey Low Cost Spay/Neuter Fund	\$4,875
Gladys Shulaw Cat Fund	\$30,000
Grants	\$205,841
Jean Senior Fund	\$3,025
Pet Pantry Fund	\$13,769
Ross-Roberts Kitten Care Fund	\$1,425
Ross-Roberts Veterinary Assistance Fund	\$47,012
Trap Neuter Return (Community Cat) Fund	\$260
Wildlife Resource Center Fund	\$1,950
Woody & Mickey Healthy Pet Fund	\$41,260

APPENDIX

FINANCIAL TRANSPARENCY

Detailed financial information is available for Fiscal Year 2025 (July 1, 2024 – June 30, 2025) and prior fiscal years upon completion of AWLA's independent audit.

Once finalized, the following documents will be accessible at awla.org/about/financials:

- *Audited financial statements*
- *IRS Form 990*
- *Detailed financial tables and summaries*

LEGAL AND ADMINISTRATIVE INFORMATION

The Animal Welfare League of Arlington is a nonprofit organization operating under contract with Arlington County to provide Animal Control Services. AWLA complies with all applicable federal, state, and local laws governing nonprofit and animal welfare organizations.

Additional legal, administrative, and policy information is available upon request or through AWLA's website.

ABOUT THIS REPORT

This Year in Review reflects:

- *Programmatic impact from calendar year 2025*
- *Financial data from Fiscal Year 2025 (July 1, 2024 – June 30, 2025)*

All information reflects the most accurate data available at the time of publication.

BOARD OF DIRECTORS

The Animal Welfare League of Arlington is governed by a volunteer Board of Directors that provides fiduciary oversight, strategic guidance, and leadership in support of AWLA's mission to protect animals, support the people who love them, and strengthen the community.

Officers

- **Alyssa Williamson**, *Board Chair*
- **Shannon Bailey**, *Vice Chair*
- **Nikki Hoffpauir**, *Secretary*
- **Olga Pamfilova**, *Treasurer*

Board Members

- **Kate Bedding**
- **Gabriel Calvo**
- **Brian Drzewiecki**
- **Heather Green**
- **Kristanne Littlefield**
- **Candice Lopez**
- **Rich McKinless**
- **Jim Wilmot**
- **Trevor Woodbury**

LEADERSHIP TEAM

AWLA's leadership team oversees organizational strategy, shelter operations, animal control services, community programs, and administrative functions. Together, they ensure that AWLA operates with professionalism, accountability, and compassion.

- **Lauren L. Lipsey**, *President & Chief Executive Officer*
- **Amy Schindler**, *Chief Operating Officer*
- **Charnita Fox**, *Senior Director of Operations*
- **Ronny Shafer**, *Director of Finance & Administration*
- **Malika Mirkhanova**, *Director of Human Resources*
- **Kat Williams**, *Senior Director of Development*
- **Jennifer Toussaint**, *Chief of Animal Control*
- **Dr. Ryan Snow**, *DVM, Veterinary Director*



YEAR *in* 20 REVIEW 25

703-931-9241

2650 S Arlington Mill Dr,
Arlington VA, 22206

WWW.AWLA.ORG

